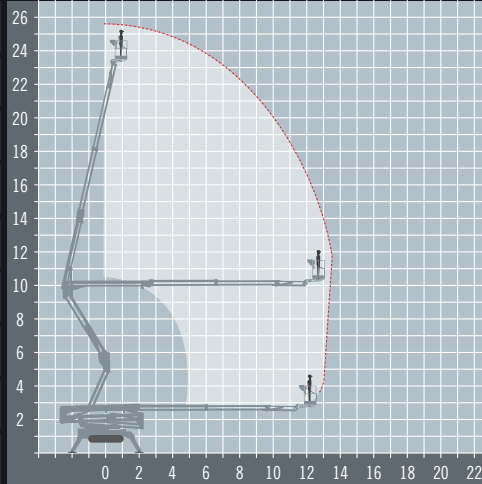


# HINOWA LL2614

## Tracked Boom Lift

REACH HEIGHT	25.7 m
PLATFORM HEIGHT	23.7 m
UP AND OVER	10 m
HORIZONTAL REACH	13.75 m
STOWED HEIGHT	1.98 m
DEPLOYED WIDTH	3.98 m
PLATFORM SIZE	1.48 x 0.69 m
WEIGHT	4,365 kg
LIFT CAPACITY	230 kg



Stowed travel size is 6.35 x 0.99 m (20' 10" x 3' 3")

-  **240V MAINS/DIESEL POWERED**  
240v mains with diesel engine for travel
-  **TRACKED FOR ROUGH TERRAIN**  
Perfect when low ground pressure is needed
-  **LEVELLING STABILISERS**  
Levels the machine for use on uneven ground
-  **EXTENDING AXLES**  
Axles extend for use and retract for transport
-  **OUTDOOR RATED**  
Wind rated for outdoor use
-  **IPAF 1b**  
Requires IPAF category 1b

The Hinowa LightLift 26.14 combines extraordinary performance enclosed in a compact machine that is just 990mm wide and less than 6 metres in length thanks to the detachable cage. It is useful in a wide range of operations including tree care, facility management and general maintenance tasks.

## A range of extra's for 'Hire or Purchase' designed to give you the GTAdvantage™

-  **STOP NUISANCE BORROWING WITH GTA SECURE™**
-  **PROTECT SENSITIVE GROUND WITH 'GROUND GUARDS'**
-  **DOUBLE POINT HARNESSES TO KEEP YOU SAFE AT HEIGHT**
-  **SPREAD THE LOAD WITH THE RIGHT SIZE SPREADER PLATES**
-  **STAY FULLY CHARGED WITH TRANSFORMERS AND LEADS**
-  **FUEL BOX REFUEL ON-SITE THE EASY WAY WITH A FUEL BOX!**

Find out more about the 'GTAdvantage' extras at [gtaccess.co.uk](http://gtaccess.co.uk)



THE POWER IN ACCESS™